



# VEILUX®

*The Art of Surveillance*

PRODUCT CATALOG



## **Explosive Proof Products & Accessories**

[www.Veilux.net](http://www.Veilux.net)

REV02242020

# TABLE OF CONTENT

---

## CONTENTS

|                                       |    |
|---------------------------------------|----|
| Explosion Proof Cameras.....          | 5  |
| Explosion Proof Thermal Cameras ..... | 12 |
| Explosion Proof Housings .....        | 13 |
| Explosion Proof Accessories.....      | 16 |
| Explosion Proof Lighting .....        | 21 |



# VEILUX

Dear customer,

Here at Veilux, we are grateful for your business and your continued confidence and support. We strive to be able to provide you with the best service and quality in the industry. We are proud to have our product line distributed and installed internationally and across the United States. We have spent time with both current and prospective customers learning their security needs and providing quality solutions for them. This has provided us with an invaluable source of information that we have used to help improve our processes and the level of service that we offer to all of our customers.

We will continue to work hard every day to provide you with the standards of excellence that you have come to rely on.

- Best in the Industry Customer Service
- Innovative and Quality Products
- Training and Support for all of our products
- Professional and Responsive Technical Support
- Dedicated and Knowledgeable Sales Professionals
- Competitive Pricing enabling you to win more business!

Thank you again for all of your continued support throughout the years.

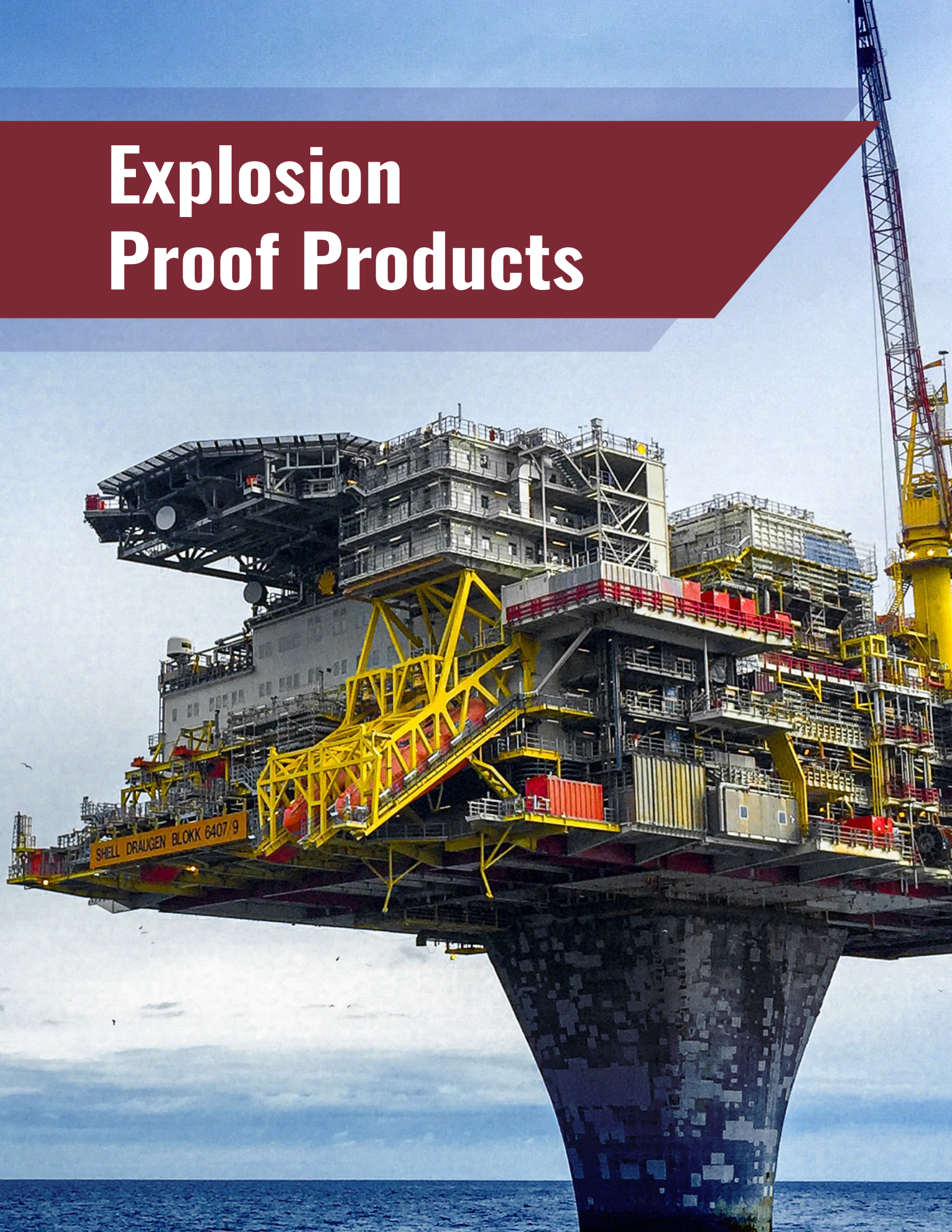
Sincerely,  
The Veilux Team

# THE ART OF SURVEILLANCE





# Explosion Proof Products





# EXPLOSION PROOF CAMERAS

## SVEX-Q25-K

ATEX Certificated Stainless Steel Explosion Proof Camera



### Features

- Adopt SONY 1/3" CMOS Sensor CCD, resolution up to 1280x960 px
- High quality IR lamp, long service life, low power consumption, lights up to 30 meters
- Window glass surface is treated with a nano-technology process which strengthens the atomic structure of the glass
- Efficient light transmittance and a oil/dust/water repellent surface
- Engineered to dissipate heat this camera can work continuously for an extended period
- Designed with Anti-shock technology to withstand minor bumps and falls
- Small size and light weight, this camera is specifically designed for the vehicles that transport dangerous goods or small areas.
- Made of 304 or 316L stainless steel it is made to withstand highly corrosive or highly explosive environments

### Dimensions



|                     |                                   |  |  |
|---------------------|-----------------------------------|--|--|
| CAMERA              | CERTIFICATE                       | Ex-Marking   | ATEX<br>II 2G Ex d IIC T6 Gb<br>II 2D Ex tb IIIC IP68 T80 Db |
|                     |                                   | Imaging Sensor   | 1/3 Sony Super HAD CCD II                                    |
|                     | Signal System                     | PAL  |  |
|                     | Resolution Ratio                  | 700TVL   |  |
|                     | Minimal Illumination              | 0.01Lux@F1.4, IR lamp Auto-open when <0 Lux                              |  |
|                     | Lens Specifications               | 4mm, 6mm (optional)  |  |
|                     | Day/Night                         | Auto switch (ICR)  |  |
|                     | BLC Backlight Compensation Method | On/off   |  |
|                     | Video Output                      | CVBS/1.0Vp-p/75Ω   |  |
|                     | Electronic Shutter                | AUTO/ 1/50 (1/60) -1/100,000sec  |  |
| IR LAMP             | SNR                               | > 50db   |  |
|                     | The White Balance                 | AUTO   |  |
|                     | IR Distance                       | 10-30M (optional)  |  |
|                     | IR Switch                         | Auto open <0Lux  |  |
| GENERAL             | Wavelength                        | 850nm  |  |
|                     | Working Temperature               | -40°C ~ 60°C   |  |
|                     | Relative Humidity                 | ≤95% (+25°C)   |  |
|                     | Atmospheric Pressure              | 80kpa~106 kpa  |  |
|                     | Supply Voltage                    | DC12V  |  |
|                     | Suitable Environment              | Explosive gas, highly combustible dust and highly corrosive environments |  |
|                     | Material                          | 304 or 316L stainless steel  |  |
|                     | Inlet Hole Specifications         | 14 x 1.5 x 1 (mm)  |  |
| External Dimensions | 140 x 92 x 104 (mm)               |  |  |
| Installation Method | Fixed Bracket, Pillar Base        |  |  |



# EXPLOSION PROOF CAMERAS

## SVEX-B25Z-Z

Explosion and Corrosion Proof 2MP or 4MP Bullet Camera with Infrared Light



|                                   |  |
|-----------------------------------|--|
| Ex-proof Mark                     | Exd II CT6 Gb/ Ex tD A21 IP68 T80°C    |
| Hazardous Location Classification | Class I Div I                          |
| Application                       | Gas zone 1, 2; dust zone 21, 22        |
| Ingress Protection                | IP68                                   |
| Housing Material                  | Stainless Steel 304 or 316L            |
| Image Sensor                      | 1/2.7" Progressive Scan CMOS           |
| Max. Image Resolution             | 2.0 megapixel                          |
| Min. Illumination                 | 0.01Lux @(F1.6, AGC ON), 0 Lux with IR |
| Shutter                           | Auto/ Manual, 1/100,000 sec            |
| Lens                              | 2.8 - 12 mm, motorized lens            |

## SVEX-Q25-Z

Explosion Proof Smart CCTV Camera with Light



|                                   |  |
|-----------------------------------|--|
| Ex-proof mark                     | Exd II CT6 Gb/ Ex tD A21 IP68 T80°C              |
| Hazardous Location Classification | Class I Div I                                    |
| Application                       | Oil tank, dangerous goods vehicle, marine vessel |
| Ingress Protection                | IP68   |
| Housing Material                  | Stainless Steel 304 or 316L                      |
| Image Sensor                      | 1/3" Progressive Scan CMOS                       |
| Horizontal Resolution             | 1920x 1080                                       |
| Min. Illumination                 | 0.01Lux @ (F1.2, AGC ON), 0 Lux with IR          |
| Shutter                           | 1/3 sec to 1/100,000 sec                         |
| Lens                              | 4mm (6mm optional)                               |
| Light Night Vision                | 0-30m  |

## SVEX-T400B-18Z

ATEX Certified Explosion Proof Motorized Bullet Camera



Key Features

|                                   |  |
|-----------------------------------|--|
| Ex-proof Mark                     | ATEX II 2G Ex d IIC T6 Gb II 2D Ex tb IIIC IP68 T80°C Db |
| Hazardous Location Classification |  |
| Lens                              | 4mm (6mm optional)                                       |
| Horizontal Resolution             | 1920x 1080   |
| Min. Illumination                 | 0.01Lux @ (F1.2, AGC ON), 0 Lux with IR                  |
| Horizontal Resolution             | 1920x 1080   |
| Min. Illumination                 | 0.01Lux @ (F1.2, AGC ON), 0 Lux with IR                  |
| Housing Material                  | Stainless Steel 304 or 316L                              |
| Ingress Protection                | IP68   |



# EXPLOSION PROOF CAMERAS

## SVEX-Q70-ZN

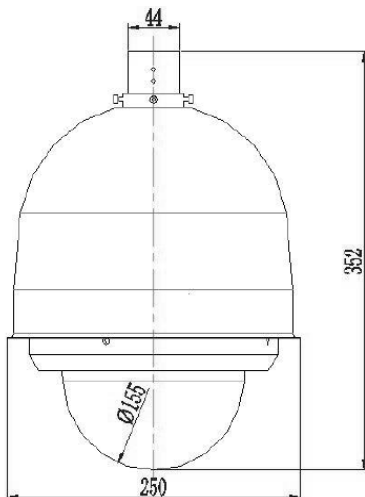
Explosion Proof Fixed Dome Camera



### Features

- Highest protection: IP68
- Class 1 Div 2
- Double ex-proof marking: EX d & Ex tD
- Wide voltage: AC24V, AC100-240V
- Stainless steel 304/ 316L housing
- Intelligent telephoto speed limits
- 360° endless Auto tracking
- 300 points patrol preset
- Wall/ ceiling mounted version
- Holds up to a 5inch - 6inch brand dome camera

### Dimensions



| CERTIFICATIONS                    | Explosive Marking   | Ex d II CT6 Gb/ Ex tD A21 IP68 T80° C   |
|-----------------------------------|---|---|
| Hazardous Location Classification | Class 1 Div 2   |   |
| Certificate                       | CNEx15.2504X  |   |
| CAMERA                            | Sensor  | 1/2.8" Progressive Scan CMOS            |
| Resolution                        | 1920(H) x 1080(V)   |   |
| Minimum Illumination              | Color: 0.05Lux@(F1.6, AGC on),<br>B/W: 0.01Lux@(F1.6, AGC on) |   |
| White Balance                     | Auto/Manual/ATW/Indoor/Outdoor/Daylight lamp/Sodium lamp      |   |
| AGC                               | Auto/Manual   |   |
| Shutter                           | 1-1s to 1/30,000s   |   |
| Day & Night                       | IR Cut Filter   |   |
| Digital Zoom                      | 16x   |   |
| Privacy Masking                   | 8 privacy masks programmable                                  |   |
| Auto Focus                        | Auto/Semi-automatic/Manual                                    |   |
| Features Supported                | 3D DNR, BLC, D-WDR, HLC, Defog                                |   |
| Focal Length                      | 4.7-129mm, 30x Optical  |   |
| Zoom Speed                        | Approx.2.7s(Optical Wide-Tele)                                |   |
| Angle of View                     | 65.2-2.11degree (Wide-Tele)                                   |   |
| Min. Working Distance             | 0-1500mm(Wide-Tele)   |   |
| Aperture Range                    | F1.6-F5.0   |   |
| Pan                               | 360° endless  |   |
| Pan Speed                         | Configurable, from 0.1°/s to 250°/s, preset speed:300°/s      |   |
| Tilt                              | From -5° to 90°   |   |
| Tilt Speed                        | Configurable, from 0.1°/s to 150°/s, preset speed:200°/s      |   |
| Presets                           | 300   |   |
| Patrol Scan                       | 8 patrols, up to 32 presets per patrol                        |   |
| Max Resolution                    | 1920 x 1080   |   |
| HOUSING                           | Threaded Hole   | 1 set of G3/4 Gland through the bracket |
| Working Voltage                   | AC24V, AC100-240V   |   |
| Communication Protocol            | TCP/IP/PELCO-D/PELCO-P, other                                 |   |
| Output Mode                       | RJ45  |   |
| Cable Connection                  | Network cable +3-core power                                   |   |
| Power                             | 25W /35W (with thermostat)                                    |   |
| Electric Current                  | 2800mA  |   |
| Enclosure Material                | Stainless steel304 or 316L                                    |   |
| Operating Temperature             | -25°C~+60°C   |   |
| Air Pressure                      | 80KPa~106KPa  |   |
| Relative Humidity                 | ≤95% (+25°C)  |   |
| Dimensions                        | Ø 250 x 352 (mm)  |   |
| Mount                             | Wall or pole or ceiling, Indoor/ outdoor                      |   |
| Net Weight                        | 12Kg  |   |
| Ingress Protection                | IP68  |   |
| Optional Choice                   | Heater, cooling, thermostat for below-10°C                    |   |

Note: This product is also available as a housing only in 304 or 316L SS Model: SVEX:-CD-A

Visit Us at [www.Veilux.net](http://www.Veilux.net)

EXPLOSION PROOF



# EXPLOSION PROOF CAMERAS



## SVEX-Q70-AHD

## SVEX-HQ30

## SVEX-Q30ZN

| Description              | Explosion Proof 2MP 32X AHD  | Liquid Cooling High Speed Dome  | Explosion Proof PTZ Speed Dome Camera |
|--------------------------|--|---------------------------------|---------------------------------------|
| <b>CERTIFICATIONS</b>    |  |                                 |                                       |
| Explosive Marking        | Exd II C T6 Gb/Ext DA21 IP68 T80°C   | Exd CT6 Gb/Ex td A21,T6         | Ex II CT6 Gb/ Ex tD A21 IP68 T80 °C   |
| Certificate              | CNEx 15.2504X  | CNEx 15.2504X                   | CNEx 15.2504X                         |
| <b>MECHANICAL</b>        |  |                                 |                                       |
| Material                 | Stainless 304 or 316L  | Stainless 304 or 316L           | Stainless steel 304 or 316L           |
| IP Rating                | IP68   | IP68                            | IP68                                  |
| Resolution               | 2MP  | 2MP                             | 700TVL                                |
| Pan                      | 360°   | -                               | 0-360°                                |
| Pan Speed                | Manual: 0.1° to 250°/s   | -                               | 90 to 0°                              |
| Tilt Range               | -5°~90° (Auto Flip )   | -                               | 0.1-400°/s                            |
| Tilt Speed               | Manual: 0.1° to 150°/s<br>Tilt preset speed:150°/s                                   | 0.1°/s ~ 400°/s                 | 0.1°- 400°/s                          |
| Digital Zoom             | 16x  | -                               | -                                     |
| Focal Length             | 4.8 to 153mm 32x Optical Zoom  | -                               | 4-92mm - 36x Optical Zoom             |
| Zoom Speed               | Approx. 5.6 s (optical, wide to tele)  | -                               | -                                     |
| Aperture Range           | F1.2 to F 4.4  | -                               | -                                     |
| Angle Field of View      | Horizontal: 55.6° to 2.04° (wide to tele)<br>Vertical: 32 4° to 1 14° (wide to tele) | -                               | -                                     |
| Min. Working Distance    | 10mm-1500mm (Wide-Tele)  | -                               | -                                     |
| Alarm                    | 2/1  | -                               | -                                     |
| Optional                 | Surge Protector, Sun Shade   | Auto Heating <1°c (Optional)    | Power Input AC24V, AC100~240          |
| <b>ELECTRICAL</b>        |  |                                 |                                       |
| Power Consumption        | 25W /35W (with thermostat)   | <50W                            | <50w                                  |
| Input Voltage            | 220VAC or 24VAC, 50/60Hz   | -13°F ~ 140°F (-25°C ~ 60°C)    | Optional: AC24V, AC100~240            |
| Cable Entries            | 1  | 1                               | 1                                     |
| Air pressure             | 80Kpa to 106Kpa  | 86Kpa ~ 106KPa                  | 80~110KPa                             |
| <b>GENERAL</b>           |  |                                 |                                       |
| Temperature              | -25°C ~ 60°C   | -40°F ~ 60°F (-40°C ~ 16°C)     | -20°C to 60°C                         |
| Humidity                 | ≤95% RH (+25°C)  | <95%RH [77°F (+25°C)]           | Up to 95%RH (25°C)                    |
| Cable Outlet Thread Spec | G-3/4"   | G-3/4"                          | Integrated Cable                      |
| Dimensions (L x H x W)   | 213 x 213 x 570 (mm)   | Ø 221 x 330 (Diameter x H) (mm) | 204 x 204 x 445 (mm)                  |
| Weight                   | 15kg   | 12kg                            | 12kg                                  |

Note: This product is also available as a housing only in 304 or 316L SS Model: SVEX:-CD-A



# EXPLOSION PROOF CAMERAS

## SVEX-Q70-ZN

Explosion Proof Fixed Dome Camera



### Features

- Highest protection: IP68
- 1/2.8" IMX322 Sony sensor, to capture the motion picture without aliasing
- Supports TVI/CVI/AHD output, the image is clear with a resolution of 1080p
- Minimum illumination: Color 0.01Lux @ (F1.2, AGC ON), BW 0.001Lux@(F1.2, AGC ON)
- IR infrared lens with up to 3 million pixels
- Advanced Y/C signal separation technology, analog filtering technology and 3D noise reduction technology
- Support ICR Day/Night Auto-switch, color and B/W, 24hr monitoring
- Nano-technology treated glass to add strength and allow for the best light transmittance. No fogging and repels oil/dust particles
- Strong explosion-proof glass with excellent light transmission as high as 96%, helps eliminate the infrared light halo
- Low power consumption. Internal air convection for efficient heat dissipation which allows it to work continuously for an extended period of time
- Available in 304 or 316L stainless steel material making this perfect for highly corrosive environments

|                           |                       |  |  |
|---------------------------|-----------------------|--|--|
| CAMERA                    | CERTIFICATIONS        | Explosive Marking  | ATEX<br>II 2G Ex d IIC T6 Gb<br>II 2D Ex tb IIIC IP68 T80°C Db |
|                           |                       | Imaging Sensor   | 1/2.8 inch IMX322 Sony sensor                                  |
|                           | Signal                | PAL/NTSC   |  |
|                           | Total Pixels          | 1956 (Horizontal) x 1266 (vertical)                          |  |
|                           | Minimum Illumination  | Color 0.01 Lux@(F1.2, AGC ON),<br>BW 0.001Lux@(F1.2, AGC ON) |  |
|                           | Lens                  | 4X motorized zoom  |  |
|                           | Synchronous Mode      | Internal synchronization                                     |  |
|                           | Signal To Noise Ratio | >58dB  |  |
|                           | Shutter               | 1/50(1/60)s-1/10,000s  |  |
|                           | Reduce Noise          | 3D Reduce noise  |  |
|                           | Video Output          | 1 way BNC  |  |
|                           | Automatic Gain        | Supported  |  |
|                           | White Balance         | Automatic / manual   |  |
|                           | MECHANICAL            | Motion Detecting   | Supported  |
| Backlight Compensation    |                       | Supported  |  |
| TVL                       |                       | 1050TVL  |  |
| Day/Night                 |                       | ICR automatic switching                                      |  |
| IR Radiation Distance     |                       | 15m  |  |
| Material                  |                       | 304 or 316L stainless steel                                  |  |
| Surface Treatment         |                       | Stainless steel or polishing                                 |  |
| Ingress Protection Level  |                       | IP68   |  |
| Inlet Hole Specifications |                       | 1x Dimensions: 14 x 1.5 (mm)                                 |  |
| GENERAL                   |                       | Power supply voltage   | DC12V 2A   |
|                           | Communication         | AHD/CVI/TVI control for option                               |  |
|                           | Temperature Range     | -40°C ~ 60°C   |  |
|                           | Relative Humidity     | ≤5% (+25°C)  |  |
|                           | Atmospheric Pressure  | 80kpa ~ 106 kpa  |  |
|                           | Installation Method   | Bracket or base installation                                 |  |

EXPLOSION PROOF

# EXPLOSION PROOF CAMERAS

## SVEX-HIR1-S

Explosion Proof & Weather Proof PTZ IR Camera



|                                   |                                       |
|-----------------------------------|---------------------------------------|
| Ex-proof Mark                     | Exd II CT6 Gb/ Ex tD A21 IP68 T80°C   |
| Hazardous Location Classification | Gas zone 1, 2; dust zone 21, 22       |
| Application                       | Gas zone 1, 2; dust zone 21, 22       |
| Ingress Protection                | IP68                                  |
| Housing Material                  | Stainless Steel 304 or 316L           |
| Image Sensor                      | 1/2.7" Progressive Scan CMOS          |
| Max. Image Resolution             | 2.0 megapixel                         |
| Min. Illumination                 | 0.01Lux @(F1.6,AGC ON), 0 Lux with IR |
| Shutter                           | Auto/ Manual, 1/100,000 sec           |
| Lens                              | 2.8 - 12 mm, motorized lens           |

## SVEX-610-2M20X-ZN

Explosion Proof Integrated PTZ Camera



|                                   |  |
|-----------------------------------|--|
| Ex-proof mark                     | 2G Ex db IIC T6 Gb / 2D Ex tb IIC T80°C Db           |
| Hazardous Location Classification | Gas zone 1, 2; dust zone 21, 22                      |
| Ingress Protection                | IP68   |
| Housing Material                  | Stainless Steel 304 or 316L                          |
| Pan/Tilt                          | Continuous 360°, 0.1~45°/s / -90°~90°                |
| Pan/Tilt                          | 1/2.8" Progressive Scan CMOS                         |
| Cruise Scan                       | Supported  |
| Presets                           | 64/128/255/300                                       |
| Alarm Input/Output                | 2-channel or 7-channel / 1-channel action with alarm |
| Audio Input/Output                | 1/1  |
| Resolution                        | 2MP  |
| Cable                             | 1pcs M25×1.5   |

## SVEX-PTZ-D136-X

Explosive Proof PTZ Camera Available in 304 or 316L Stainless Steel



|                                   |  |
|-----------------------------------|--|
| Ex-proof mark                     | Exd II C T6 GB/DIP A20 TA T6                         |
| Hazardous Location Classification | Class 1 Div 2  |
| Ingress Protection                | IP68   |
| Housing Material                  | Stainless Steel 304 or 316L                          |
| Pan/Tilt                          | 360°, 01-45°/s / -90° to 90°                         |
| Cruise Scan                       | Supported  |
| Presets                           | 64/128/255/300                                       |
| Alarm Input/Output                | 2-channel or 7-channel / 1-channel action with alarm |
| Audio Input/Output                | 1/1  |
| Resolution                        | 2MP  |
| Cable                             | Integrated   |

Note: This product is also available as a housing only in 304 or 316L SS Model: SVEX:-PTZ-D1



# EXPLOSION PROOF CAMERAS



**SVEX-1301-2M30X-ZN**



**SVEX-Q30ZN**

| Description              | Explosion Proof PTZ with 30X IP Camera Housing      | Explosion Proof ATEX Certified Camera Housing         |
|--------------------------|---|---|
| <b>CERTIFICATIONS</b>    |   |   |
| Explosive Marking        | Exd II C T6 GB/DIP A20 TA T6                        | II 2G Ex d IIC T6 Gb<br>II 2D Ex tb IIIC IP68 T80° Db |
| Certificate              | CNEx13 3114   | ATEX  |
| <b>MECHANICAL</b>        |   |   |
| Material                 | Stainless 304 or 316L                               | Stainless steel 304 or 316L                           |
| IP Rating                | IP68  | IP66  |
| Resolution               | 2MP   | 2MP   |
| Pan                      | 360°  | 0° ~ 360°   |
| Pan Speed                | 01° - 45°/s   | 0.1°/s~40°/s  |
| Tilt Range               | -90° to +90°  | ±90°  |
| Tilt Speed               | -   | 0.1°/s ~ 40°/s  |
| Digital Zoom             | 12x   | -   |
| Focal Length             | 4.5~135mm 30x optical zoom                          | 4.7~169.2mm, 36x                                      |
| Zoom Speed               | Approx. 5.6 s (optical, wide to tele)               | Approx.3s (Optical Wide-Tele)                         |
| Aperture Range           | F1.6 - F4.4   | F1.6 – F5.0   |
| Angle Field of View      | -   | Horizontal: 65.5° - 2.11° (Wide-Tele)                 |
| Min. Working Distance    | -   | 10-1500mm (Wide-Tele)                                 |
| Alarm                    | 2ch, 7ch/ 1ch                                       | 1ch /1ch  |
| Optional                 | Surge Protector, Optical Fiber Output, Audio, Alarm | Thermostat System                                     |
| <b>ELECTRICAL</b>        |   |   |
| Power Consumption        | 50W /70W (with thermostat)                          | <50w  |
| Input Voltage            | 100~240 VAC   | AC85V-260V  |
| Cable Entries            | 1pcs G3/4 or NPT3/4                                 | 1   |
| Air pressure             | 80Kpa to 106Kpa                                     | 80~106KPa   |
| <b>GENERAL</b>           |   |   |
| Temperature              | -25°C ~ 60°C  | -40°C to 60°C   |
| Humidity                 | ≤95% No Condensation                                | Up to 95%RH (25°C)                                    |
| Cable Outlet Thread Spec | G-3/4"  | G-3/4"  |
| Dimensions (L x H x W)   | 316 x 285 x 358 (mm)                                | -   |
| Weight                   | 23kg  | 18.5kg  |

EXPLOSION PROOF

# EXPLOSION PROOF THERMAL CAMERAS



## **SVEX-HIR7-THERMAL-2M30X-XXXXX-ZN**

Explosion Proof Positioning Unit W/ Built-In Thermal Camera

|                       |   |
|-----------------------|---|
| Ex-proof Mark         | Exd IIC T6 Gb/Ex tD A21 IP68 T80°C  |
| Application           | Gas zone 1, 2 (mixture of group IIA, IIB, IIC, T1~T6 gases, vapors and air may exist); dust zone 21, 22 |
| Ingress Protection    | IP68  |
| Housing Material      | Stainless Steel 304 or 316L   |
| Image Sensor          | 1/2.8" Progressive Scan CMOS  |
| Max. Image Resolution | 2 megapixels  |
| Min. Illumination     | Color: 0.05Lux @ (F1.6, AGC ON)<br>B/W: 0.01Lux @ (F1.6, AGC ON)  |
| Digital Zoom          | 12x   |
| Optical Zoom          | 30X, 4.5-135mm  |
| Lens                  | Distance: 10mm-1500mm(Wide-Tele)<br>Angle: 58.3-3.2 degree (Wide-Tele)                                  |
| Alarm                 | Motion detection, tampering alarm, storage full, storage exception                                      |

## **SVEX-1301-2M36X-ZN**

ATEX Certificated Stainless Steel Explosion Proof Camera



|                                   |   |
|-----------------------------------|---|
| Ex-proof Mark                     | ATEX<br>II 2G Ex d IIC T6 Gb<br>II 2D Ex tb IIIC IP68 T80°C Db  |
| Hazardous Location Classification | Class I Div I   |
| Application                       | Gas zone 1, 2 (mixture of group IIA, IIB, IIC, T1~T6 gases, vapors and air may exist); dust zone 21, 22 |
| Ingress Protection                | IP68  |
| Housing Material                  | Stainless Steel 304 or 316L   |
| Image Sensor                      | 1/2.8" IMX322 Sony sensor   |
| Max. Image Resolution             | 1956 (Horizontal) x 1266 (vertical), 1050TVL  |
| Min. Illumination                 | Color: 0.04 Lux @ (F1.6, AGC ON)<br>B/W: 0.004 Lux @ (F1.6, AGC ON)                                     |
| Digital Zoom                      | 12x   |
| Lens                              | 4X motorized zoom   |
| IR Radiation Distance             | 15m   |
| Video Output                      | 1 way BNC   |
| Signals Supported                 | TVI/CVI/AHD output, 1080p   |



# EXPLOSION PROOF HOUSINGS



## SVEX-HQ20

## SVEX-T100

## SVEX-T300

| Description              | Explosion Proof Camera Housing                           | Explosion Proof Camera Housing   | Explosion Proof Camera Housing with IR  |
|--------------------------|--|--|---|
| <b>CERTIFICATIONS</b>    |  |  |   |
| Explosive Marking        | T400A Exd II BT6 /DIP A20 TA T6                          |  | II 2G Ex db II C T6 Gb,<br>II 2D Ex tb IIIC T80 °C Db   |
| Certificate              | CNEx06.1036x   |  | ATEX, IECEx, CE   |
| <b>MECHANICAL</b>        |  |  |   |
| Material                 | Stainless 304 or 316L                                    |  |   |
| IP Rating                | IP68   |  |   |
| Window Thickness         | 10 mm  |  | -   |
| Window Area              | Ø 66mm   |  | -   |
| <b>ELECTRICAL</b>        |  |  |   |
| Power Consumption        | 20W (Heater Included)                                    |  | 15W/25W (with thermostat)<br>≤36W (without heat,fan)  |
| Input Voltage            | 220VAC   |  | AC100-240V or AC24V 50-60Hz   |
| Voltage Scope            | ±10%   |  | -   |
| Working Current          | ≤ 0.5A   |  | -   |
| Cable Entries            | 2  |  | 2   |
| Connection               | 2-Core Cable for Camera Power                            |  | Optical Video signal: 1-way video output<br>Optical Audio: 1-way input, 1-way output<br>Optical Alarm: 2-way alarm input, 1-way alarm output<br>2m integrated cable |
| Air pressure             | 80KPa ~ -106KPa  | 80KPa~110KPa   | 80KPa~110KPa  |
| <b>GENERAL</b>           |  |  |   |
| Temperature              | -25°C ~ +60°C  |  | -25°C~+60°C/-40°C~+60°C   |
| Humidity                 | 95% RH (+25°C)   |  | ≤95% (25°C)   |
| Cable Outlet Thread Spec | G-3/4":  |  | M27×1.25, G3/4, NPT3/4  |
| Wiper                    | -  | No   | Yes   |
| Sunshield                | -  | Optional   | Yes   |
| Mounting                 | Fixed Bracket  | Wall, pole, ceiling mounted way  | Wall Mount, Pole Mount  |
| Dimensions (L x H x W)   | Inner: 260 x 80 x 80 (mm)<br>Outer: 380 x 178 x 160 (mm) | Inner: 250 x 78 x 75 (mm)<br>Outer: 524 x 179 x 208 (mm)   | Inner: 250 x 78 x 75 (mm)<br>Outer: 524 x 179 x 215 (mm)  |
| Weight/Ship Weight       | 8.8kg/9kg  | 15kg   | 16kg  |
| Optional                 | Heater –<br>Works While it is Under -10°C ± 5°C          | TVS6000V surge protect, multimode or<br>single mode, Sunshield, Auto-cooling,<br>Auto-heating, RJ45 network signal | TVS6000V surge protect, multimode or<br>single mode, Sunshield, Auto-cooling,<br>Auto-heating, RJ45 network signal  |

# EXPLOSION PROOF HOUSINGS



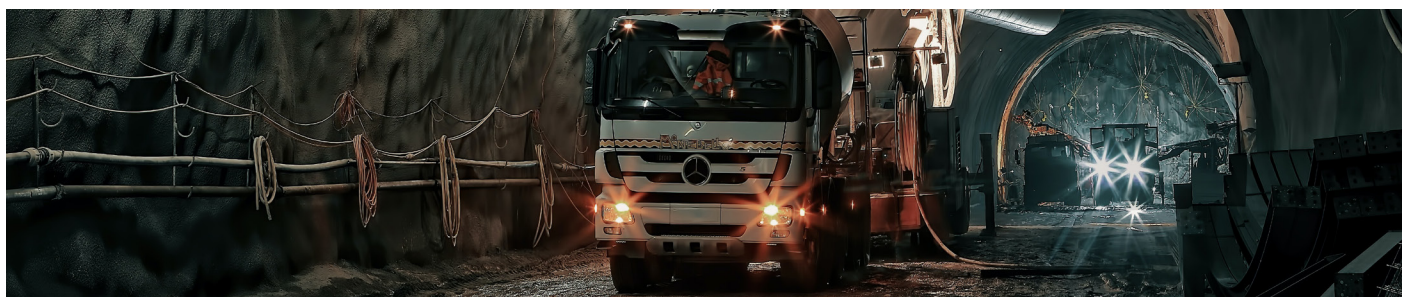
**SVEX-T400**



**SVEX-T500A**

| Description              | Explosion Proof Housing with IR   | Explosion Proof All-Weather Housing   |
|--------------------------|---|---|
| <b>CERTIFICATIONS</b>    |   |   |
| Explosive Marking        | Exd IIC T6 GB/DIP A20 TA, T6<br>Gas Zone 1,2; Dust Zone 21, 22  | Ex II 2 GD Ex d IIC T6 Gb<br>Ext III C T80°C Db                                     |
| Certificate              | IECEX, CNEC   | Nemko 13ATEX 1525   |
| <b>MECHANICAL</b>        |   |   |
| Material                 | Stainless steel 304 or 316L   |   |
| IP Rating                | IP68  | IP66  |
| Window Thickness         | 10mm  | 15mm  |
| Window Area              | Ø 66mm  | 80mm  |
| IR Distance              | up to 50m   | -   |
| <b>ELECTRICAL</b>        |   |   |
| Input Voltage            | 12VDC or 220VAC / 50Hz  | AC110-220/24VAC, 50/60Hz  |
| Voltage Scope            | ±10%  | ±10%  |
| Working Current          | 0.5A  | 2A  |
| Power Consumption        | 20W (Heater Included)   | 30W   |
| Cable Entries            | 3   | 3   |
| Connection               | 4-Core Cable for Lens Control<br>2-Core Cable for Camera Power<br>Video Cable for Video Signal Output | 2-core for power;<br>4-core for lens control;<br>Coaxial cable for video signal out |
| Air Pressure             | 80KPa ~106KPa   | 80KPa~110KPa  |
| <b>GENERAL</b>           |   |   |
| Temperature              | -25°C ~ 60°C  | -40°C to 60°C   |
| Humidity                 | 95% RH (+25°C)  | Up to 95% RH (24°C)   |
| Cable Outlet Thread Spec | G-3/4"  | G-3/4" or M25 x 1.5   |
| Mounting                 | Fixed Bracket   | Wall Mount  |
| Dimensions (L x H x W)   | Inner: 257.7 x 116 x 116 (mm)<br>Outer: 343 x 192 x 195 (mm)  | Inner: 260 x 115.5 x 98 (mm)<br>Outer: Ø188 x 657 (mm)                              |
| Weight/Ship Weight       | 13.2kg  | 16kg  |
| Optional                 | Heater  | Washer System can be Integrated   |

EXPLOSION PROOF





# EXPLOSION PROOF HOUSINGS



## SVEX-6004C

## SVEX-HSF

## SVEX-TH100

| Description               | Explosive, Dust and Corrosion Proof Housing  | Liquid Cooling Dust-proof Housing | Explosive Proof Thermal Housing                                    |
|---------------------------|--|-----------------------------------|--|
| <b>CERTIFICATIONS</b>     |  |                                   |  |
| Explosive Marking         | -  | -                                 | Exd II CT6 Gb/ Ex tD A21 IP68 T80°C                                |
| Certificate               | -  | -                                 | CNEx 17.1573   |
| <b>MECHANICAL</b>         |  |                                   |  |
| Material                  | Stainless 304 or 316L  | Stainless 304 or 316L             | Stainless 304 or 316L  |
| IP Rating                 | IP68   | IP66                              | IP68   |
| Window Thickness          | 8mm  | 5 mm                              | 8mm thickness tempered glass or Germanium glass for thermal camera |
| Window Area               | Ø 66mm   | Ø 60mm                            | Ø 70mm   |
| Cooling water Joint       | -  | Inner Diameter Ø13mm Tube         | -  |
| Cooling water Temperature | -  | ≤+35°C                            | -  |
| Cooling water Pressure    | -  | <0.3Mpa                           | -  |
| Cooling water Flow        | -  | 3m³/H                             | -  |
| Air Input Size            | -  | 3/8"                              | -  |
| Air Input Pressure        | -  | 0.2Mpa                            | -  |
| <b>ELECTRICAL</b>         |  |                                   |  |
| Power Consumption         | 30W (Heater Included)  | -                                 | -  |
| Input Voltage             | 220VAC or 24VAC, 50/60Hz   | -                                 | Optional: AC24V, AC100~240V, DC12V, POE Power Supply               |
| Voltage Scope             | ±10%   | -                                 | -  |
| Working Current           | ≤ 0.5A   | -                                 | -  |
| Cable Entries             | 3  | 2                                 | -  |
| Connection                | 2-Core Cable for Camera Power<br>4-Core Cable for Lens Control<br>4-Core Cable for Wiper Power and Control | -                                 | 2  |
| Air pressure              | 86 ~ -106KPa   | 86 ~ 106KPa                       | 80KPa~110Kpa   |
| <b>GENERAL</b>            |  |                                   |  |
| Temperature               | -40°C ~ 60°C   | ≤250°C                            | -20°C~+60°C  |
| Humidity                  | ≤95% RH (25°C)   | <95% RH [77°F (25°C)]             | ≤95% RH (25°C)   |
| Cable Outlet Thread Spec  | G-3/4"   | G-3/4"                            | G-3/4"   |
| Mounting                  | Fixed Bracket  | Fixed Bracket                     | Fixed Bracket  |
| Dimensions (L x H x W)    | Inner: 260 x 90 x 70 (mm)  | Inner: 260 x 90 x 70 (mm)         | Inner: 379 x 85 x 85 (mm)  |
| Weight/Ship Weight        | 9kg  | 8.5kg                             | 7.5kg  |
| Optional                  | Heater – Work while under -10°C ± 5°C  | -                                 | Sunshade, Voltage Input  |

# EXPLOSION PROOF ACCESSORIES

## SVEX-JXD

Explosion Proof Junction Box



### Features

- Stainless steel material
- With multi-protocol decoder inside
- Optional address and signal speed
- Lens voltage optional
- Optional other electrical equipments
- 6 cable outlets
- Indoor and outdoor installation for all-weather use
- IP68

| SPECIFICATIONS   |                                    |
|------------------|------------------------------------|
| Ex-Marking       | Exd II CT6                         |
| Certificate      | CNEx05.0534                        |
| License No.      | XK06-123-00251                     |
| ENVIRONMENTAL    |                                    |
| Air Pressure     | 86~106KPa                          |
| Temperature      | -49°F ~ 140°F (-45°C ~ +60°C)      |
| Humidity         | ≤95%RH [77°F (+25°C)]              |
| ELECTRICAL       |                                    |
| Connection       | 8 Pin Terminal                     |
| Rated Value      | 250V/20A                           |
| Cable Type       | 22~14AWG                           |
| MECHANICAL       |                                    |
| Material         | 1Cr18Ni9Ti or 316L                 |
| IP Rating        | IP68                               |
| Dimensions       | 200(H) x 200(W) x 80(D) mm         |
| Weight           | 7.7 lb (3.5Kg)                     |
| Shipping Weight  | 28.6 lb (13Kg)                     |
| Cable Ports      | 4                                  |
| Cable Entry Size | G-3/4"                             |
| Mount            | Indoor and outdoors for wall mount |

## SVEX-JXD2

Explosion Proof Junction Box



### Features

- IP68, dust tight, protect against continuous immersion in water
- G3/4" threaded holes for cable connection
- Rated for outdoors, petrochemical, high corrosive environments, and more.
- CNEX certificate no.: CNEx 16.1481

| SPECIFICATIONS     |                                      |
|--------------------|--------------------------------------|
| Ex-Marking         | ExdII CT6, Gb/ Ex t D A21 IP68 T80°C |
| Certificate        | CNEx 16.1481                         |
| ENVIRONMENTAL      |                                      |
| Air Pressure       | 80KPa~106KPa                         |
| Temperature        | -25°C~+60°C (-13°F to 140°F)         |
| Humidity           | ≤95% (25°C)                          |
| ELECTRICAL         |                                      |
| Rated Value        | 220V/21A                             |
| MECHANICAL         |                                      |
| Material           | 304 or 316L Stainless Steel          |
| IP Rating          | IP68                                 |
| Dimensions (HxWxD) | 84 x 187 x 187 (mm)                  |
| Weight             | 7.7 lb (3.5kg)                       |
| Shipping Weight    | 28.6 lb (13kg)                       |
| Cable Ports        | 4                                    |
| Cable Entry Size   | G-3/4"                               |
| Mount              | Indoor and outdoors for wall mount   |



# EXPLOSION PROOF ACCESSORIES

## SVEX-JXD4

Explosion Proof Junction Box



### Features

- Stainless steel 304 or 316L material
- Enclosure Protection: IP68 (1.2m/45min)
- ATEX, IECEx, CE certified
- Applicable for Zone 1 and Zone 2 hazardous areas that explosive mixture of group IIA, IIB, IIC, T1~T6 gases, vapors and air may exist,
- Zone 21 and Zone 22 hazardous areas that explosive dust may exist
- Dimension: 440\*393\*253mm
- Cable entry holes\*4pcs (M27\*25)

### SPECIFICATIONS

|                |   |
|----------------|---|
| Ex-Marking     | II 2G Ex db II C T6 Gb,<br>II 2D Ex tb IIIC T80 °C Db   |
| Certificate    | ATEX, IECEx, CE   |
| Hazardous Area | zone 1, 2<br>(IIA, IIB, IIC, T1~T6 gases, vapors and air may exist)<br>zone 20, 21 (explosive dust may exist) |

### ENVIRONMENTAL

|              |                |
|--------------|----------------|
| Air Pressure | 80KPa ~ 110Kpa |
| Temperature  | -40°C ~ 60°C   |
| Humidity     | <95% (25°C)    |

### ELECTRICAL

|       |                      |
|-------|----------------------|
| Power | AC100-240V, or AC24V |
|-------|----------------------|

### MECHANICAL

|                    |                             |
|--------------------|-----------------------------|
| Material           | Stainless Steel 304 or 316L |
| IP Rating          | IP68                        |
| Dimensions (HxWxD) | 440 x 393 x 253 (mm)        |
| Weight             | 15kg                        |
| Cable Ports        | 4x M27 x 25                 |



## SVEX-M1

### Features

- Stainless Steel Material
- Indoor & Outdoor User
- Easy Installation & Maintenance

### SPECIFICATIONS

|               |  |
|---------------|--|
| Material      | Stainless Steel                                  |
| Weight        | 3.5Kg (Stainless Steel)<br>2.7Kg (Iron Painting) |
| Load          | 50Kg   |
| Mounting Type | Wall Mount                                       |

# EXPLOSION PROOF ACCESSORIES



**SVEX-171-Z**



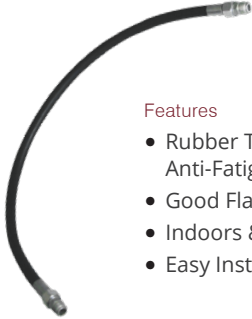
**SVEX-151-Z**

|                           |   |                    |            |  |                            |                    |                    |
|---------------------------|---|--------------------|------------|--|----------------------------|--------------------|--------------------|
| Description               | Explosion Proof Monitor with GVA & BNC Connectors |                    |            | 15" Explosive Proof Monitor            |                            |                    |                    |
| <b>CERTIFICATIONS</b>     |   |                    |            |  |                            |                    |                    |
| Explosive Marking         | Exd II BT6 / DIP A21 TA, T6                       |                    |            | Ex II 2G Ex dII T6 (Tamb=50°C)         |                            |                    |                    |
| Certificate               | CNEx06.1580                                       |                    |            | Sira 07ATEX1124X                       |                            |                    |                    |
| License Number            | XK06-123-00251                                    |                    |            | -                                      |                            |                    |                    |
| <b>MECHANICAL</b>         |   |                    |            |  |                            |                    |                    |
| Material                  | Stainless Steel 304 or 316L                       |                    |            | 1Cr18Ni9Ti or 316L                     |                            |                    |                    |
| IP Rating                 | IP65  |                    |            | IP65                                   |                            |                    |                    |
| Window Thickness          | 12 mm   |                    |            | 12 mm                                  |                            |                    |                    |
| Window Area               | 306 x 230 (mm)                                    |                    |            | 306 x 230 (mm)                         |                            |                    |                    |
| Cable Outlets             | 2   |                    |            | 2                                      |                            |                    |                    |
| Mounting                  | Vertical placement or special bracket             |                    |            | Stand or By Suspending Bracket         |                            |                    |                    |
| <b>ENVIRONMENTAL</b>      |   |                    |            |  |                            |                    |                    |
| Air Pressure              | 88~108KPa   |                    |            | 86~106KPa                              |                            |                    |                    |
| Temperature               | 0°C ~ +50°C                                       |                    |            | 0°C~+50°C                              |                            |                    |                    |
| Humidity                  | ≤ 95%RH(+25°C)                                    |                    |            | ≤ 95%RH (+25°C)                        |                            |                    |                    |
| <b>ELECTRICAL</b>         |   |                    |            |  |                            |                    |                    |
| Input Voltage             | 100VAC~240VAC                                     |                    |            | 100VAC~220VAC                          |                            |                    |                    |
| Signal                    | 1Vp-p Composite Video                             |                    |            | 1 Vp-p Composite Video                 |                            |                    |                    |
| Working Current           | ≤ 300 mA  |                    |            | ≤300mA                                 |                            |                    |                    |
| Power Consumption         | 24W   |                    |            | 24W                                    |                            |                    |                    |
| Resistance                | 75Ω   |                    |            | 75Ω                                    |                            |                    |                    |
| Joint                     | Video Cable and Power Cable Out                   |                    |            | Video Cable & Power Cable Out          |                            |                    |                    |
| RGB Input                 | 15-Pin D-SUB                                      |                    |            | 15pin D-SUB                            |                            |                    |                    |
| S-VGS Input               | 4-Pin Mini DIN                                    |                    |            | 4-pin Mini DIN                         |                            |                    |                    |
| Panel                     | 1 for On / Off Power                              |                    |            | 1 For On/Off Power                     |                            |                    |                    |
| Connection                | 2-Core Power Cable; 1-Core Video Cable            |                    |            | 2-Core Power Cable; 1-Core Video Cable |                            |                    |                    |
| <b>LCD SPECIFICATIONS</b> |   |                    |            |  |                            |                    |                    |
| Panel                     | 17.1 Inch<br>(38.1cm), TFT                        | Horizontal Angle   | 140°(CR>5) | Panel                                  | 15inch (38cm),<br>TFT      | Horizontal Angle   | 140° (CR>5)        |
| Color                     | 16,770,000  | Response Time      | 16 ms      | Color                                  | 16,770,000                 | Response Time      | 8 ms               |
| Pixel Distance            | 0.297 mm  | Horizontal Refresh | 38 ~ 60Khz | Pixel Distance                         | 0.297 mm                   | Horizontal Refresh | 38~60KHz           |
| View Area                 | 304.1mm(W) x<br>228.0mm(H)                        | Pitching Refresh   | 56 ~ 75Hz  | View Area                              | 304.1mm(W) X<br>228.1mm(H) | Pitching Refresh   | 56~75Hz            |
| Contrast                  | 500:1   | Bandwidth          | 80MHz      | Contrast                               | 550: 1                     | Bandwidth          | 80MHz              |
| Brightness                | 300cd/m2  | Resolution         | 1024 x 768 | Brightness                             | 300cd/m2                   | Resolution         | 1024x768 @<br>60Hz |
| <b>GENERAL</b>            |   |                    |            |  |                            |                    |                    |
| Cable Outlet Thread Spec  | G-3/4" or M25X1.5                                 |                    |            | G-3/4 "or M25X1.5                      |                            |                    |                    |
| Dimensions (L x H x W)    | 480 x 338 x 220 (W x H x D) (mm)                  |                    |            | 468 x 336 x 220 (W x H x D) (mm)       |                            |                    |                    |
| Weight/Ship Weight        | 28 kg/ 31 kg                                      |                    |            | 24 kg/28 kg                            |                            |                    |                    |

# EXPLOSION PROOF ACCESSORIES

## SVEX-FLEXTUBE

Explosion Proof Flexibility Tube

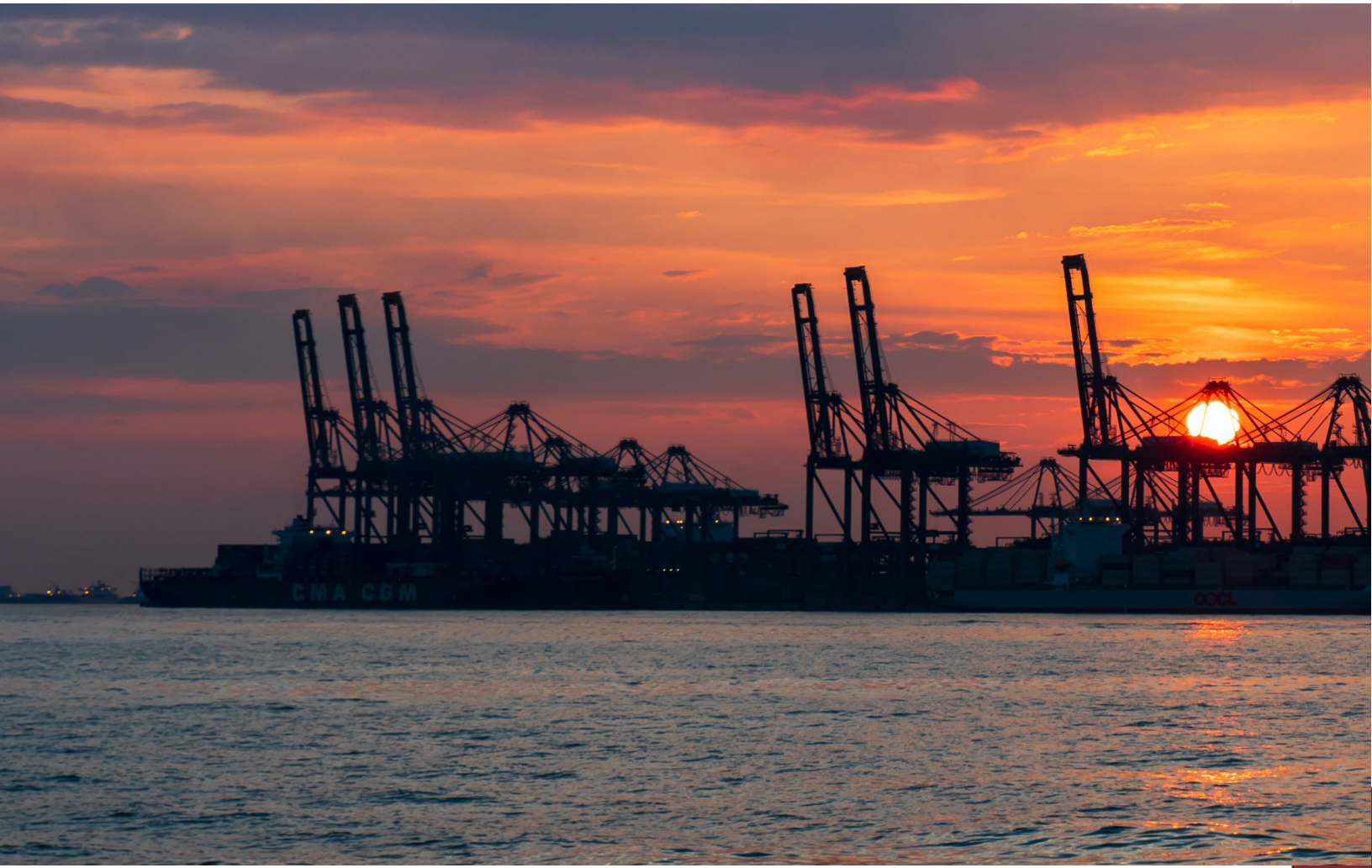


### Features

- Rubber Tube Good Pressure Stand, Excellent Bend & Anti-Fatigue Feature
- Good Flammation, Oil & Corrosion Function
- Indoors & Outdoors Use
- Easy Installation & Maintenance

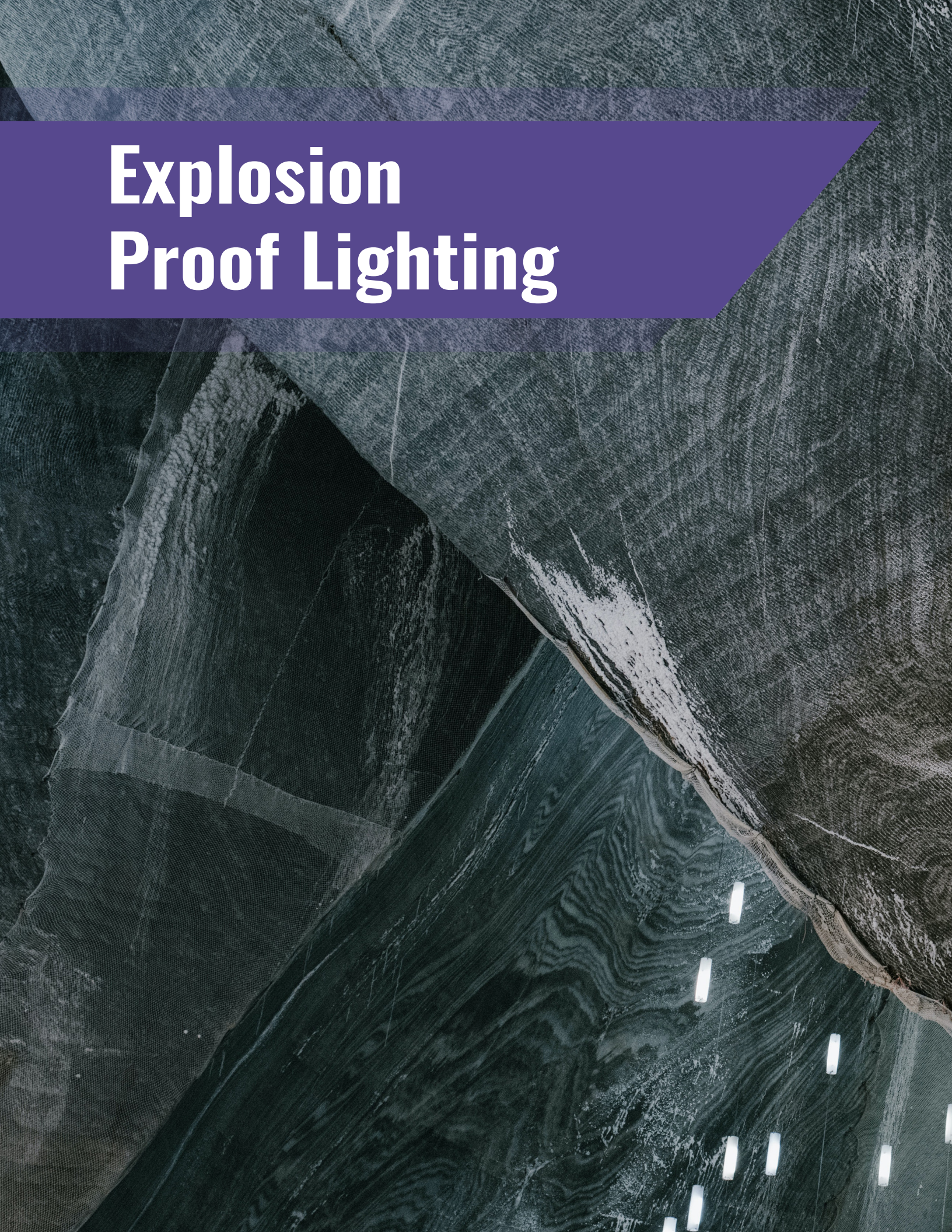
| SPECIFICATIONS |  |
|----------------|--|
| Ex-Marking     | Exd I / II   |
| Certificate    | CNEx04.1307  |
| License No.    | XK06-123-00251   |
| MECHANICAL     |  |
| Material       | Rubber Tube Inside w/ Steel Knit, Two Heads w/ Galvanized Screw Joints |
| IP Rating      | IP-54  |

| Type              | Inner Diameter | Outer Diameter | Rubber Thickness (mm) |       | Steel Net. Diameter (mm) |          | Min Bend Diameter (mm) | Screw Joint Type | Total Length (m) |
|-------------------|----------------|----------------|-----------------------|-------|--------------------------|----------|------------------------|------------------|------------------|
|                   |                |                | Inner                 | Outer | Size                     | Accuracy |                        |                  |                  |
| SVEX-FLEXTUBE-1   | 13             | 23             | >1.5                  | >1.0  | 20.0                     | ±0.8     | 190                    | G-3/4"           | 1.0              |
| SVEX-FLEXTUBE-1.5 | 13             | 23             | >1.5                  | >1.0  | 20.0                     | ±0.8     | 190                    | G-3/4"           | 1.5              |
| SVEX-FLEXTUBE-2   | 13             | 23             | >1.5                  | >1.0  | 20.0                     | ±0.8     | 190                    | G-3/4"           | 2.0              |
| SVEX-FLEXTUBE-5   | 13             | 23             | >1.5                  | >1.0  | 20.0                     | ±0.8     | 190                    | G-3/4"           | 1.0              |
| SVEX-FLEXTUBE-15  | 13             | 23             | >1.5                  | >1.0  | 20.0                     | ±0.8     | 190                    | G-3/4"           | 1.5              |
| SVEX-FLEXTUBE-20  | 13             | 23             | >1.5                  | >1.0  | 20.0                     | ±0.8     | 190                    | G-3/4"           | 2.0              |





# Explosion Proof Lighting





# EXPLOSION PROOF LIGHTING

SHORT GLASS SERIES



**VL-EXS8230-XX**  
10/20W-45W Ex Proof  
Short Emergency Light

- Power: AC100-270V
- Size (Dia. x H): Ø 180 x 148 (mm)
- Luminous Efficiency 120 lm/W
- Protection Grade: IP66
- Available: 10/20W, 30W, 40W, 45W

SHORT GLASS SERIES



**VL-EXS8231-XX**  
50W-90W Ex Proof  
Short Hanging Light

- Power: AC100-270V
- Size (Dia. x H): Ø 230 x 211 (mm)
- Luminous Efficiency 120 lm/W
- Protection Grade: IP66
- Available: 50W, 60W, 80W, 90W

SHORT GLASS SERIES



**VL-EXS8232-XXX**  
100W-150W Ex Proof  
Short Street Light

- Power: AC100-270V
- Size (Dia. x H): Ø 300 x 275 (mm)
- Luminous Efficiency 120 lm/W
- Protection Grade: IP66
- Available: Empty Fixture, 100W, 120W, 150W

SHORT GLASS SERIES



**VL-EX8233H-XXX**  
50W-90W Ex Proof Short  
High Bay Light

- Power: AC100-270V
- Size (Dia. x H): Ø 267x296 (mm)
- Luminous Efficiency 120 lm/W
- Protection Grade: IP66
- Available: 50W, 60W, 80W, 90W

SHORT GLASS SERIES



**VL-EX8235S-XXX**  
100W-150W Ex Proof  
Short High Bay Light

- Power: AC100-270V
- Size (Dia. x H): Ø 356 x 232 (mm)
- Beam angle: 94.1°
- Available: 100W, 120W, 150W

SHORT GLASS SERIES



**VL-EXL8235-XXX**  
150W-240W Ex Proof  
Long High Bay Light

- Power: AC100-270V
- Size (Dia. x H): Ø 415 x 245 (mm)
- Beam angle: 89.4°
- Available: 150W, 200W, 240W

SHORT GLASS SERIES



**VL-EX8231-XXX**  
50W-90W Ex Proof  
Spot Light w/Lens

- Power: AC100-270V
- Size (Dia. x H): Ø 415 x 245 (mm)
- Beam angle: 14°
- Available: 50W, 60W, 80W, 90W

SHORT GLASS SERIES



**VL-EX8232-XXX**  
50W-90W Ex Proof  
Spot Light w/Lens

- Power: AC100-270V
- Size (Dia. x H): Ø 300 x 236 (mm)
- Beam angle: 14°
- Available: 50W, 60W, 80W, 90W

LONG GLASS SERIES



**VL-EXL8230-XX**  
20W-45W Ex Proof  
Long Hanging Light

- Power: AC100-270V
- Size (Dia. x H): Ø 180 x 200 (mm)
- Beam angle: 146.4°
- Available: 20W, 30W, 40W, 45W

LONG GLASS SERIES



**VL-EXLG-8231-XX**  
50W-90W Ex Proof  
Long Hanging Light

- Power: AC100-270V
- Size (Dia. x H): Ø 230 x 307 (mm)
- Beam angle: 141.9°
- Available: 50W, 60W, 80W, 90W

LONG GLASS SERIES



**VL-EXLG-8232-XXX**  
100W-150W Ex Proof  
Long Hanging Light

- Power: AC100-270V
- Size (Dia. x H): Ø 325 x 354 (mm)
- Beam angle: 141.9°
- Available: 100W, 120W, 150W

LONG GLASS SERIES



**VL-EXLG-8233-XX**  
50W-90W Ex Proof  
Long Platform Light

- Power: AC100-270V
- Size (Dia. x H): Ø 273 x 389 (mm)
- Beam angle: 141.9°
- Available: 50W, 60W, 80W, 90W

# EXPLOSION PROOF LIGHTING

FLOOD LIGHT SERIES



**VL-EX8199-XXX**  
80W-100W Ex Proof  
Flood Light

- Power: AC100-270V
- Size (LxWxH): 383 x 228 x 77 (mm)
- Beam Angle: 106.5°
- Protection Grade: IP66
- Available: 80W, 100W

FLOOD LIGHT SERIES



**VL-EXSP-8260-XXX**  
70W-120W Ex Proof  
Small Split Flood Light

- Power: AC100-270V
- Size (LxWxH): 300 x 186 x 174 (mm)
- Beam Angle: 106.5°
- Protection Grade: IP66
- Available: 70W, 75W, 100W, 120W

FLOOD LIGHT SERIES



**VL-EXMP-8260-XXX**  
80W-190W Ex Proof  
Medium Split Flood Light

- Power: AC100-270V
- Size (LxWxH): 383 x 228 x 77 (mm)
- Beam Angle: 106.5°
- Protection Grade: IP66
- Available: 80-100W, 120W, 150W, 190W

FLOOD LIGHT SERIES



**VL-EXLP-8260-XXX**  
150W-250W Ex Proof Short  
Large Split Flood Light

- Power: AC100-270V
- Size (LxWxH): 383 x 228 x 77 (mm)
- Beam Angle: 106.5°
- Protection Grade: IP66
- Available: Empty fixture, 150W, 200W, 220W, 250W

FLOOD LIGHT SERIES



**VL-EXS8266-XXX**  
100W-270W Ex Proof  
Small Flood Light

- Power: AC100-270V
- Size (LxWxH): 552 x 323 x 190 (mm)
- Beam angle: 106.5°
- Available: Empty fixture, 240W, 300W, 380W

FLOOD LIGHT SERIES



**VL-EXL8266-XXX**  
100W-270W Ex Proof  
Large Flood Light

- Power: AC100-270V
- Size (LxWxH): 630 x 425 x 195 (mm)
- Beam angle: 89.4°
- Available: Empty fixture, 350W, 400W, 440W, 480W

FLOOD LIGHT SERIES



**VL-EXI8189-XX**  
40W-70W Ex Proof  
Integral Flood Light

- Power: AC100-270V
- Size (LxWxH): 300 x 186 x 137 (mm)
- Beam angle: 106°
- Available: Empty fixture, 40W, 60W, 70W

FLOOD LIGHT SERIES



**VL-EXI8189B-XX**  
40W-70W Explosion Proof  
Small Integral Flood Light

- Power: AC100-270V
- Size (LxWxH): 259 x 186 x 137 (mm)
- Beam angle: 106°
- Available: Empty fixture, 40W, 60W, 70W

LINEAR LIGHT SERIES



**VL-EX8197S**  
100W-270W Ex Proof  
Single Linear Light

- Power: AC110V - 270V
- Size (LxWxH): 1280 x 123 x 146 (mm)
- Explosion-proof fluorescent lamp
- Ex-proof Grade: ExdIICT6

LINEAR LIGHT SERIES



**VL-EX8197D**  
100W-270W Ex Proof  
Double Linear Light

- Power: AC110V - 270V
- Size (LxWxH): 1280 x 202 x 146 (mm)
- 2x Explosion-proof fluorescent lamp
- Ex-proof Grade: ExdIICT6

EMERGENCY LIGHT



**VL-EX8190-2**  
100W-270W Ex Proof  
Emergency LED Light

- Power: AC110V - 270V
- Size (LxWxH): 230x260x85 (mm)
- Charging Time: 48h
- Working Time: 120 min

EMERGENCY SIGN



**VL-EX8191**  
100W-270W Ex Proof  
Emergency Sign Light

- Power: AC110V - 270V
- Size (LxWxH): 350 x 193 x 79 (mm)
- Weight: 2.8 kg
- Ex-proof Grade: ExdIICT6



# EXPLOSION PROOF LIGHTING

STREET LIGHT



**VL-EXO8231-XX**  
**50W-90W Ex Proof**  
**Street Light**

- Power: AC100-270V
- Size (Dia. x H): Ø 230 x 265 (mm)
- Beam angle: 122.4°
- Available: 50W, 60W, 80W, 90W

STREET LIGHT



**VL-EX8231H-XX**  
**100W-150W Ex Proof**  
**Street Light**

- Power: AC100-270V
- Size (Dia. x H): Ø 325 x 305 (mm)
- Beam angle: 122.4°
- Available: 100W, 120W, 150W

SHORT GLASS SERIES



**VL-EXOM-8260-XXX**  
**100W-200W Ex Proof**  
**Medium Hanging Light**

- Power: AC100-270V
- Size (LxWxH): 315 x 690 x 95 (mm)
- Luminous Efficiency 120 lm/W
- Beam angle: 106.5°
- Available: Empty Fixture, 100W, 120W, 160W, 200W

SHORT GLASS SERIES



**VL-EXLM-8260-XXX**  
**160W-250W Ex Proof**  
**Large Street Light**

- Power: 100W - 270W
- Size (LxWxH): 315 x 690 x 95 (mm)
- Luminous Efficiency 120 lm/W
- Beam angle: 89.4°
- Available: 160W, 200W, 220W, 250W



# REFERENCES

Veilux provides security and surveillance solutions to all types of establishments. We enable integration of all Security and Safety Systems. These selected examples represent only part of Veilux references in the MEA region.

## IRAQ

- Minister of electricity office
- Alrasikh Corporation
- Tigris & sureties Bank.
- North Bank (Karradah Branch).
- Albelad Aleslami Bank (Mansoor Branch).
- English Village of Kurdistan (Erbil).
- Naz City Flats in Erbil Kurdistan.
- Khan Zadh in Kurdistan Erbil.
- Baghdad Bank – Bakubah Branch.
- Baghdad Bank – Mansur Branch.
- International Center of Agriculture.
- Al-Alamyah Groups
- Asia Cell Company
- Central Hospital in Al-Faluja

## KSA

- Specialized Penal Court
- Military Factory Expansion
- Hail Governor Building
- Prince Sultan Specialized Hospital
- Saudi Port Authority
- Abdul Samad Al Qurashi Companies Group
- Fawaz Al Hokair Group
- Olaya Towers
- Arig Hq Complex
- Criminal Court
- El Swailem Tower Project
- Saudi Electricity Company
- Al-Muheissen & Al-Belyawee Tower
- Moi Information Center Project
- Saudi Hollandi Bank
- BMW Showrooms
- King Salman Science fiction
- Arab National Bank (ANB)
- Saudi Hollandi Bank (SHB)
- AlSaudi Alfransi Bank (SFB)
- AlRajhi Bank (ARB)
- Alinma Bank

## JORDAN

- Raghadan Palace

- Armed Forces
- Intermediate Petrochemical Industries
- Marka Prison
- Manaseer Crushers
- Manaseer Oil and Gas Stations
- Zain Retail Stores Security System
- Soufan Group Warehouse
- Irbid Prison
- Endoomy
- Total Oil and Gas Stations
- Ghera's Group Building
- Ugarit Juice Factory and Warehouses
- IPI Intermediate Petrochemical Company
- Jordan Central Bank
- Amman Cham Palace Hotel
- Suhail Sabbagh Villa – Al Ghour
- Majed Elayyan Villa
- Majd Al Masri Villa
- Maher Al Masri Villa
- A. Majeed Zahran Villa
- Rainbow Café
- Raed Shreim Villa
- Issam Kalouti - Abdoun Villa
- Dr. Bayan Abdlehaq Family Residence
- Naser Lami Villa
- Two branches for Toyota (Lexus) branch for maintenance in Al-Bayader
- Jordan Atomic Energy Commission

## KUWAIT

- ANAF Technology
- Womens College of Engineering
- Mens College of Engineering
- Kuwait Shuwaikh Power Point
- ACK university
- Al Ghunaim Trading Company
- Gulf Security Company
- Chilis® Restaurants
- The Coffee Bean and Tea Leaf Restaurants
- Ocean Basket Restaurant
- Boston Market Restaurant
- Carino's® Restaurant
- Which Wich® Restaurant
- Private Villas

- NATO
- Al Kout Mall
- Sama Educational Company

## BAHRAIN

- Gulf Petrochemical Industries (GPIC)

## LEBANON

- Federal Bank of Lebanon
- Schneller School
- Dar Al Aytam School - Qoubbeh
- Ukrainian Embassy
- Makassed School
- Municipality City Surveillance
- Ministry of Health
- KMC Hospital
- Abou Rejeily Residential Bldg.
- One to one hotel Dhour Choueir
- IC Elementary School
- Adidas®
- Second Cup
- GS Grand Stores
- Ibrahim Zein Jewelry
- Villagio
- Central Station - Restaurant
- Villa Hojeij
- Magic Planet - BCC
- Hôtel Dieu De France Hospital
- Villa Nader
- Residence Moukheiber
- Residence Dr. Khoury
- Azadea HQ
- Residence Sakr
- Villa Abou Mhaya
- Villa Christian Nader
- Trillium Development HQ
- Horizon Tower
- Fitness Zone Gym
- Pizza Co. Restaurant
- Living 442 Tower
- Emkan Finance Company
- Printech
- Sama Beirut Tower
- Municipality City Surveillance







**Veilux Inc.**

802 Greenview Dr., Suite 200  
Grand Prairie, TX 75050

**Tel:** 800-510-6528

**Fax:** 214-988-2858

**E-mail:** [sales@veilux.com](mailto:sales@veilux.com)

Copyright © Veilux Inc. 2021. All rights reserved.

The specifications and descriptions of products and services contained in this catalog were correct at the time of publishing. Veilux.net reserves the right to change specifications or withdraw products without notice.